

## Price List

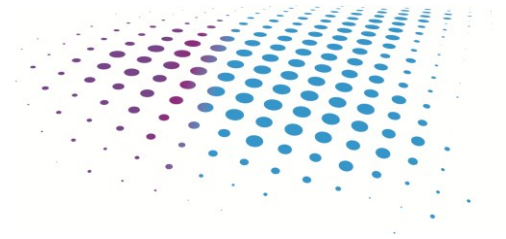
**2026 Q1**

Page 1 of 4

ITEM	COURSE DESCRIPTION	ONLINE PRICE (USD)	IN-PERSON PRICE (USD)
XLX-AI ACCEL	Accelerating Applications with the Vitis Unified Software Environment	\$1800.00	\$1800.00
BLT-X4M	Adaptive Computing for Managers	\$600.00	\$600.00
BLT-DEBUG1	Advanced Debug Techniques for Hardware Engineers (BLT Exclusive)	\$1800.00	\$1800.00
XLX-LANG ADV VHDL	Advanced VHDL	\$1200.00	\$1200.00
XLX-FPGA-DSGNCLOSURE	Design Closure Techniques	\$1200.00	\$1200.00
XLX-CONN PCIe	Designing an Integrated PCI Express System	\$1800.00	\$1800.00
BLT-SV-DV	Designing and Verification with SystemVerilog (BLT Exclusive)	\$1800.00	\$1800.00
XLX-FPGA VDES1	Designing FPGAs Using the Vivado Design Suite 1	\$1800.00	\$1800.00
XLX-FPGA VDES2	Designing FPGAs Using the Vivado Design Suite 2	\$1800.00	\$1800.00
XLX-FPGA VDES3	Designing FPGAs Using the Vivado Design Suite 3	\$1800.00	\$1800.00
XLX-FPGA VDES4	Designing FPGAs Using the Vivado Design Suite 4	\$1800.00	\$1800.00
XLX-LANG SV DES	Designing with SystemVerilog	\$1200.00	\$1200.00
XLX-ACAP-VARCH	Designing with the Versal Adaptive SoC: Architecture	\$1800.00	\$1800.00
XLX-ACAP-VDM	Designing with the Versal Adaptive SoC: Design Methodology	\$1800.00	\$1800.00
XLX-ACAP NOC	Designing with the Versal Adaptive SoC: Network on Chip	\$600.00	\$600.00
XLX-ACAP POWER-BD	Designing with the Versal Adaptive SoC: Power and Board Design	\$1200.00	\$1200.00
XLX-ACAP-PCIE	Designing with the Versal Adaptive SoC: PCI Express Systems	\$1800.00	\$1800.00
XLX-CONN-RFSOC	Designing with the Zynq UltraScale+ RFSoc	\$1800.00	\$1800.00
XLX-LANG VERILOG	Designing with Verilog	\$1800.00	\$1800.00
XLX-ACAP AIE1	Designing with Versal AI Engine: Architecture and Design Flow -1	\$1800.00	\$1800.00
XLX-ACAP AIE2	Designing with Versal AI Engine: Graph Programming with AI Engine Kernels - 2	\$1800.00	\$1800.00
XLX-ACAP AIE3	Designing with Versal AI Engine: Kernel Programming and Optimization - 3	\$1800.00	\$1800.00
XLX-LANG VHDL	Designing with VHDL	\$1800.00	\$1800.00
XLX-CONN TRX	Designing with Xilinx Serial Transceivers	\$1200.00	\$1200.00
XLX-AI INFER	Developing AI Inference Solutions with the Vitis AI Platform	\$1800.00	\$1800.00
FPGA-DFX	Dynamic Function eXchange (DFX) Using the Vivado Design Suite	\$1200.00	\$1200.00

All course pricing is per student for public classes. Please call for private/on-site class pricing.

See page 2 for Additional Courses



## Price List

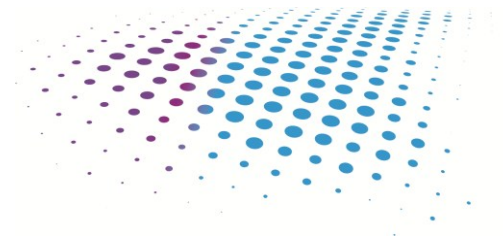
**2026 Q1**

Page 2 of 4

ITEM	COURSE DESCRIPTION	ONLINE PRICE (USD)	IN-PERSON PRICE (USD)
XLX-EMBD-PLNX	Embedded Design with PetaLinux Tools	\$1800.00	\$1800.00
XLX-EMBD-HET	Embedded Heterogeneous Design	\$1800.00	\$1800.00
XLX-EMBD-HW	Embedded Systems Design	\$1800.00	\$1800.00
BLT-EHWB	Embedded Systems Hardware Design Boot Camp (BLT Exclusive)	\$1800.00	\$1800.00
XLX-EMBD-SW	Embedded Systems Software Design	\$1800.00	\$1800.00
XLX-SOC-OS-HYPER	Operating Systems and Hypervisors in Adaptive SoCs	\$1800.00	\$1800.00
BLT-VIVB2	Spartan-6 / ISE User Migration Training (BLT Exclusive)	\$1800.00	\$1800.00
XLX-FPGA-VDM	UltraFast Design Methodology	\$1800.00	\$1800.00
XLX-SOM-VISION	Using Vision-based Applications with the Kria SOM	\$1800.00	\$1800.00
XLX-LANG SV VER	Verification with SystemVerilog	\$1800.00	\$1800.00
XLX-DSP-MCSIM	Vitis Model Composer: A MATLAB and Simulink-based Product with DSP Techniques	\$1800.00	\$1800.00
BLT-VIVB1	Vivado Boot Camp Phase-1: Designing for Performance	\$1800.00	\$1800.00
BLT-VIVB2	Vivado Boot Camp Phase-2: Implementing for Performance	\$1800.00	\$1800.00
BLT-VIVB3	Vivado Boot Camp Phase-3: Achieving Performance	\$1800.00	\$1800.00
XLX-EMBD-ZSA	Zynq SoC System Architecture	\$1800.00	\$1800.00
XLX-EMBD-ZUPHW	Zynq UltraScale+ MPSoC for the Hardware Designer	\$1800.00	\$1800.00

All course pricing is per student for public classes. Please call for private/on-site class pricing and coaching pricing.

See page 3 for Products and Services



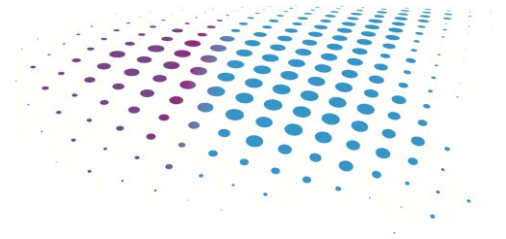
## **Price List**

**2026 Q1**

Page 3 of 4

ITEM	DESCRIPTION	PRICE EACH (USD)
BLT-ASP-4	ASP Phase - 4 week	\$20,000.00
BLT-ASP-6	ASP Phase - 6 week	\$30,000.00
BLT-ASP-8	ASP Phase - 8 week	\$40,000.00
BLT-ASP-10	ASP Phase - 10 week	\$50,000.00
BLT-ASP-12	ASP Phase - 12 week	\$60,000.00
BLT-IS-SAS	Includes: BLT-IP-SAT, BLT-ILT-SAT-B-P, BLT-SS-E-U	\$45,000.00
BLT-IP-SAT	SoC Acceleration Toolkit	\$20,000.00
BLT-ILT-B-SAT-P	SoC Acceleration Toolkit Training	\$15,000.00
BLT-SS-E-U	SoC Acceleration Integration Support (Unclassified)	\$15,000.00
BLT-HPP-1305-KZV-SFP		\$47,499.00
BLT-HPP-1305-KZ-SFP		\$37,499.00
BLT-HPP-1305-K-SFP		\$22,499.00
BLT-HPP-1305-KZV-FMC		\$46,999.00
BLT-HPP-1305-KZ-FMC		\$36,999.00
BLT-HPP-1305-K-FMC		\$21,999.00
BLT-HWP-IPB-3	Interposer Board	\$1,750.00
BLT-HWP-IPB-4	Interposer Board	\$2,100.00
BLT-HWP-ADC-FMC-5	ADC FMC	\$4,825.00
BLT-HWP-ADC-FMC-6	ADC FMC	\$12,312.50

**See page 4 for Services**



**Price List**

**2026 Q1**

Page 4 of 4

DESCRIPTION OF SERVICES	HOURLY RATE (USD)
<b>HARDWARE ENGINEERING*</b>	
Subject Matter Expert 2 (SME 2)	\$333.33
Subject Matter Expert 1 (SME 1)	\$300.00
Senior Engineer	\$273.33
<b>SOFTWARE ENGINEERING*</b>	
Subject Matter Expert 2 (SME 2)	\$333.33
Subject Matter Expert 1 (SME 1)	\$273.33
Senior Engineer	
<b>MANAGEMENT AND ADMIN*</b>	
Program Manager	\$198.67
Program Administrator	\$132.00

\*Direct Rates / Commercial Pricing. Please contact BLT for Government and USG Prime Pricing.