

Price List

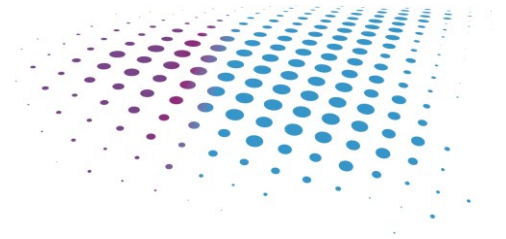
2025 Q1

Page 1 of 4

| ITEM | COURSE DESCRIPTION | ONLINE PRICE (USD) | IN-PERSON PRICE (USD) |
|----------------------|---|--------------------|-----------------------|
| XLX-AI ACCEL | Accelerating Applications with the Vitis Unified Software Environment | \$1800.00 | \$1800.00 |
| BLT-X4M | Adaptive Computing for Managers | \$600.00 | \$600.00 |
| BLT-DEBUG1 | Advanced Debug Techniques for Hardware Engineers (BLT Exclusive) | \$1800.00 | \$1800.00 |
| XLX-LANG ADV VHDL | Advanced VHDL | \$1200.00 | \$1200.00 |
| XLX-FPGA-DSGNCLOSURE | Design Closure Techniques | \$1200.00 | \$1200.00 |
| XLX-CONN PCIe | Designing an Integrated PCI Express System | \$1800.00 | \$1800.00 |
| BLT-SV-DV | Designing and Verification with SystemVerilog (BLT Exclusive) | \$1800.00 | \$1800.00 |
| XLX-FPGA VDES1 | Designing FPGAs Using the Vivado Design Suite 1 | \$1800.00 | \$1800.00 |
| XLX-FPGA VDES2 | Designing FPGAs Using the Vivado Design Suite 2 | \$1800.00 | \$1800.00 |
| XLX-FPGA VDES3 | Designing FPGAs Using the Vivado Design Suite 3 | \$1800.00 | \$1800.00 |
| XLX-FPGA VDES4 | Designing FPGAs Using the Vivado Design Suite 4 | \$1800.00 | \$1800.00 |
| XLX-LANG SV DES | Designing with SystemVerilog | \$1200.00 | \$1200.00 |
| XLX-ACAP-VARCH | Designing with the Versal Adaptive SoC: Architecture | \$1800.00 | \$1800.00 |
| XLX-ACAP-VDM | Designing with the Versal Adaptive SoC: Design Methodology | \$1800.00 | \$1800.00 |
| XLX-ACAP NOC | Designing with the Versal Adaptive SoC: Network on Chip | \$600.00 | \$600.00 |
| XLX-ACAP POWER-BD | Designing with the Versal Adaptive SoC: Power and Board Design | \$1200.00 | \$1200.00 |
| XLX-ACAP-PCIE | Designing with the Versal Adaptive SoC: PCI Express Systems | \$1800.00 | \$1800.00 |
| XLX-CONN-RFSOC | Designing with the Zynq UltraScale+ RFSoc | \$1800.00 | \$1800.00 |
| XLX-LANG VERILOG | Designing with Verilog | \$1800.00 | \$1800.00 |
| XLX-ACAP AIE1 | Designing with Versal AI Engine: Architecture and Design Flow -1 | \$1800.00 | \$1800.00 |
| XLX-ACAP AIE2 | Designing with Versal AI Engine: Graph Programming with AI Engine Kernels - 2 | \$1800.00 | \$1800.00 |
| XLX-ACAP AIE3 | Designing with Versal AI Engine: Kernel Programming and Optimization - 3 | \$1800.00 | \$1800.00 |
| XLX-LANG VHDL | Designing with VHDL | \$1800.00 | \$1800.00 |
| XLX-CONN TRX | Designing with Xilinx Serial Transceivers | \$1200.00 | \$1200.00 |
| XLX-AI INFER | Developing AI Inference Solutions with the Vitis AI Platform | \$1800.00 | \$1800.00 |
| FPGA-DFX | Dynamic Function eXchange (DFX) Using the Vivado Design Suite | \$1200.00 | \$1200.00 |

All course pricing is per student for public classes. Please call for private/on-site class pricing.

See page 2 for Additional Courses



Price List

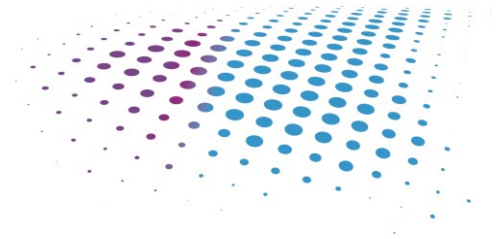
2025 Q1

Page 2 of 4

| ITEM | COURSE DESCRIPTION | ONLINE PRICE (USD) | IN-PERSON PRICE (USD) |
|------------------|---|--------------------|-----------------------|
| XLX-EMBD-PLNX | Embedded Design with PetaLinux Tools | \$1800.00 | \$1800.00 |
| XLX-EMBD-HET | Embedded Heterogeneous Design | \$1800.00 | \$1800.00 |
| XLX-EMBD-HW | Embedded Systems Design | \$1800.00 | \$1800.00 |
| BLT-EHWB | Embedded Systems Hardware Design Boot Camp (BLT Exclusive) | \$1800.00 | \$1800.00 |
| XLX-EMBD-SW | Embedded Systems Software Design | \$1800.00 | \$1800.00 |
| XLX-SOC-OS-HYPER | Operating Systems and Hypervisors in Adaptive SoCs | \$1800.00 | \$1800.00 |
| BLT-VIVB2 | Spartan-6 / ISE User Migration Training (BLT Exclusive) | \$1800.00 | \$1800.00 |
| XLX-FPGA-VDM | UltraFast Design Methodology | \$1800.00 | \$1800.00 |
| XLX-SOM-VISION | Using Vision-based Applications with the Kria SOM | \$1800.00 | \$1800.00 |
| XLX-LANG SV VER | Verification with SystemVerilog | \$1800.00 | \$1800.00 |
| XLX-DSP-MCSIM | Vitis Model Composer: A MATLAB and Simulink-based Product with DSP Techniques | \$1800.00 | \$1800.00 |
| BLT-VIVB1 | Vivado Boot Camp Phase-1: Designing for Performance | \$1800.00 | \$1800.00 |
| BLT-VIVB2 | Vivado Boot Camp Phase-2: Implementing for Performance | \$1800.00 | \$1800.00 |
| BLT-VIVB3 | Vivado Boot Camp Phase-3: Achieving Performance | \$1800.00 | \$1800.00 |
| XLX-EMBD-ZSA | Zynq SoC System Architecture | \$1800.00 | \$1800.00 |
| XLX-EMBD-ZUPHW | Zynq UltraScale+ MPSoC for the Hardware Designer | \$1800.00 | \$1800.00 |

All course pricing is per student for public classes. Please call for private/on-site class pricing and coaching pricing.

See page 3 for Products and Services



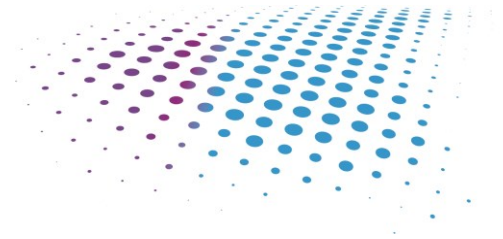
Price List

2025 Q1

Page 3 of 4

| ITEM | DESCRIPTION | PRICE EACH (USD) |
|----------------------|---|------------------|
| BLT-ASP-4 | ASP Phase - 4 week | \$20,000.00 |
| BLT-ASP-6 | ASP Phase - 6 week | \$30,000.00 |
| BLT-ASP-8 | ASP Phase - 8 week | \$40,000.00 |
| BLT-ASP-10 | ASP Phase - 10 week | \$50,000.00 |
| BLT-ASP-12 | ASP Phase - 12 week | \$60,000.00 |
| BLT-IS-SAS | Includes: BLT-IP-SAT, BLT-ILT-SAT-B-P, BLT-SS-E-U | \$45,000.00 |
| BLT-IP-SAT | SoC Acceleration Toolkit | \$20,000.00 |
| BLT-ILT-B-SAT-P | SoC Acceleration Toolkit Training | \$15,000.00 |
| BLT-SS-E-U | SoC Acceleration Integration Support (Unclassified) | \$15,000.00 |
| BLT-HPP-1305-KZV-SFP | | \$47,499.00 |
| BLT-HPP-1305-KZ-SFP | | \$37,499.00 |
| BLT-HPP-1305-K-SFP | | \$22,499.00 |
| BLT-HPP-1305-KZV-FMC | | \$46,999.00 |
| BLT-HPP-1305-KZ-FMC | | \$36,999.00 |
| BLT-HPP-1305-K-FMC | | \$21,999.00 |
| BLT-HWP-IPB-3 | Interposer Board | \$1,750.00 |
| BLT-HWP-IPB-4 | Interposer Board | \$2,100.00 |
| BLT-HWP-ADC-FMC-5 | ADC FMC | \$4,825.00 |
| BLT-HWP-ADC-FMC-6 | ADC FMC | \$12,312.50 |

See page 4 for Services



Price List

2025 Q1

Page 4 of 4

| DESCRIPTION OF SERVICES | HOURLY RATE (USD) |
|---------------------------------|-------------------|
| HARDWARE ENGINEERING* | |
| Subject Matter Expert 2 (SME 2) | \$333.33 |
| Subject Matter Expert 1 (SME 1) | \$300.00 |
| Senior Engineer | \$273.33 |
| SOFTWARE ENGINEERING* | |
| Subject Matter Expert 2 (SME 2) | \$333.33 |
| Subject Matter Expert 1 (SME 1) | \$273.33 |
| Senior Engineer | |
| MANAGEMENT AND ADMIN* | |
| Program Manager | \$198.67 |
| Program Administrator | \$132.00 |

*Direct Rates / Commercial Pricing. Please contact BLT for Government and USG Prime Pricing.